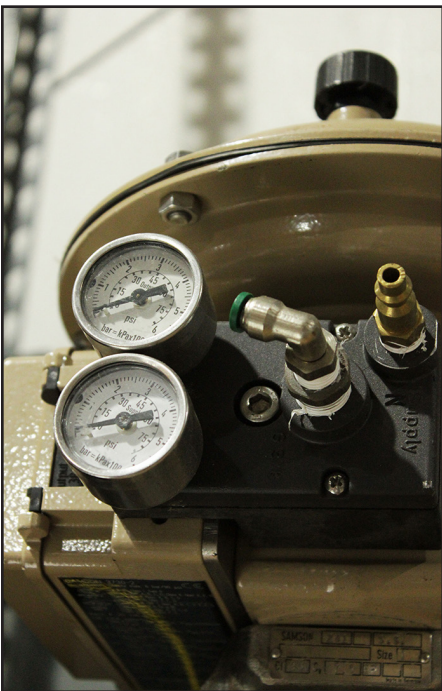




GEORGE E. BOOTH CO., INC.

Engineered Products for Process Measurement and Control



Founded in 1963, George E. Booth Co., Inc. is the preeminent supplier of process instrumentation, controls, and related services. The company serves a variety of customers in Illinois, Indiana, Kentucky, Ohio, and Tennessee.



TRAINING

George E. Booth Co., Inc. offers a multifaceted and state-of-the-art technical training program to engineering, maintenance, and operations personnel at all levels.

We provide basic, intermediate, and specialized instruction courses. We aim to minimize risk and maximize productivity of your technicians to ensure the sustained and reliable operation of your instruments.

Our courses offer a blend of classroom and practical training on our Process Training Unit—a full-scale, working process skid with on-line instrumentation and controls.

For more information on training, evaluations, dates, and pricing, visit www.gebooth.com/training or email us at training@gebooth.com.



COMPLETE PROJECT MANAGEMENT

MAIN INSTRUMENT VENDOR SERVICES

When you choose our Complete Project Management services, we will work with you to understand your needs and customize a specific solution.



Reduce cost



Speed to market



Reduce risk

SCOPE OF WORK

Our Complete Project Management option will provide you with front-end, warehousing, and on-site services.

Front End Services:

- Procurement of instruments
- Collection of documentation
- Expediting delivery of instruments

Warehousing Services:

- Receiving of instruments
- Inspection and testing of instruments
- Consolidation prior to site shipment

On-Site Services:

- Support plant commissioning
- Startup of instrumentation

BENEFITS

Minimize capital investments and operational expenses

- Reduce time to market
- Optimize supply chain
- Commercial cost management
- Resource management

Reduce project risk

- Inspection/receipt verification
- Tagging
- Risk and quality management

Operational excellence and performance

- Consistency of documentation
- Schedule management
- Communication and collaboration management
- Status reporting

1966

George Sr. purchases first building in Park Fletcher Business Park.



SERVICE



George E. Booth Co., Inc. offers a variety of services that span your process and control needs. Our team of professional SCADA engineers, calibration team, and two UL-listed panel shops are ready to assist.

SERVICES INCLUDE:

- Calibration
- Embedded Service Technicians
 - Hurst Technical Services division
- Instrumentation Repair
- Valve Repair
- Loop Check and Troubleshooting
- Turnaround
- Custom Valve Assembly
- Industrial/Control Valve Maintenance
- Steam Trap Audits
- Site Start-Up/Commissioning
 - Includes additional 2-year warranty on Endress+Hauser equipment
- 24/7 Emergency Service Available



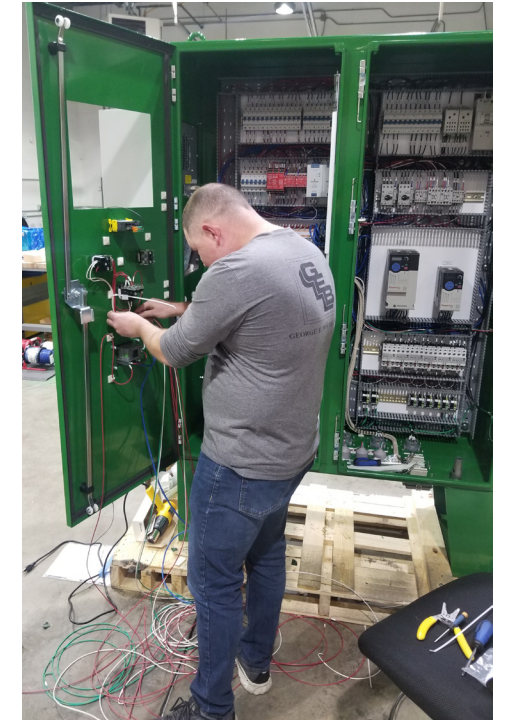
Certifications and Accreditations

- Endress+Hauser Authorized Service Partner
 - Technicians available who are A2LA Accredited in accordance with ISO/IEC 17025
- ISO 9001 Certified
- Ignition 8.1 Certified

PANEL SHOP

With more than three decades of experience, the George E. Booth Co., Inc. integration team has the knowledge, experience, and expertise to get the best out of your manufacturing system. As a certified Rockwell Systems Integrator, we specialize in the automation, fabrication, and design of process control systems.

Our team saves clients time and money, streamlining production lines to increase efficacy and safety for plants and facilities around the country.



SCADA

We provide automation and telemetry services for water/wastewater utilities and industrial partners. Our team specializes in the design, installation, and maintenance/calibration of SCADA systems, radio telemetry systems, control panels, and process control instrumentation.

Our SCADA services include:

- Installation of new Control Systems
- Conversion of older RTU/PLC equipment and programming
- Automation of existing plants
- Radio Surveys
- Control System Maintenance and Troubleshooting
- Instrument Installation and Calibration
- Operator Interface Software Packages
- Manufacture of Custom Control Panels
 - UL508A/UL698A certified



1990 The Indianapolis office moves to its current location on W. 10th Street.

INSTRUMENTATION



BROOKS
INSTRUMENT

*Beyond Measure
Not available in Illinois.*



Liquid Analysis

- pH/ORP
- Conductivity
- Dissolved Oxygen
- Turbidity
- Chlorine
- Analyzers
- Samplers

Endress+Hauser

People for Process Automation



Level

- Guided Wave Radar
- Non-Contacting Radar
- Hydrostatic
- Ultrasonic
- Vibronic Point Level
- Capacitance
- Gamma (Radiometric)



Flow

- Coriolis
- Electromagnetic
- Ultrasonic
- Vortex
- Differential Pressure
- Thermal Mass



Pressure

- Absolute/Gauge
- Hydrostatic
- Differential Pressure



Temperature

- RTDs
- Thermocouples
- Thermowells



Optical Analysis

- Raman Spectroscopy
- TDLAS



System Products

- Data Managers
- Data Loggers
- Power Supplies and Barriers
- Gateways and Modems
- Device Configuration Tablets



Coriolis Mass Flow Controllers
for Liquids and Gases



Thermal Mass Flow
Controllers for Gases



Glass Flow Meters



Metal Tube Flow Meters



Portable Gas Analyzers



Stack Gas Analyzers



Air Quality
Monitoring Analyzers



Multi-Component Analyzers

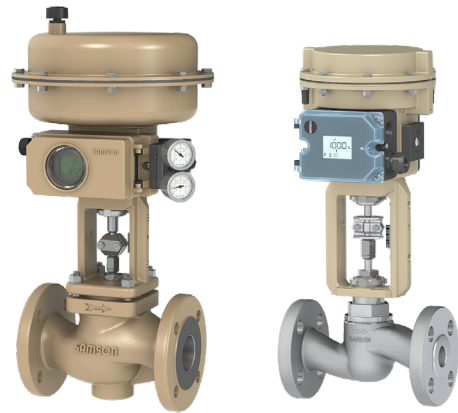
HORIBA

1995

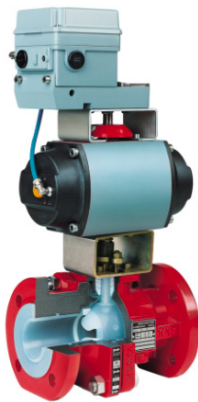
The Indianapolis facility expands, providing greater warehousing.



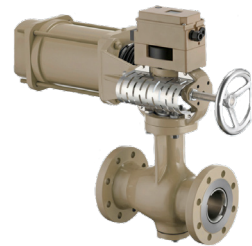
CONTROL VALVES



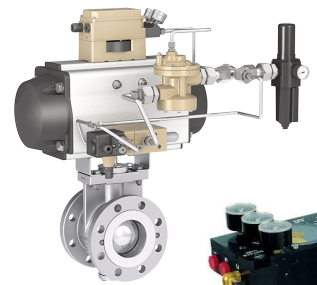
Globe Control Valves



Ball Valves



Eccentric Rotary Plug Valves



Rotary Plug Valves



Positioners



Butterfly Valves



AUTOMATED VALVES



Custom Valve Matrix



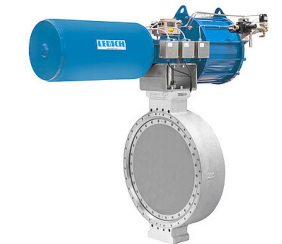
Limit Switches



Industrial Diaphragm Valves



Butterfly Valves



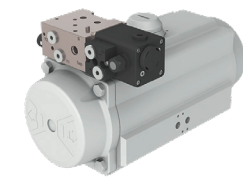
Knife Gate Valves



Ball Valves



Solenoid Valves



1997

The company opens a facility in Calvert City, KY.

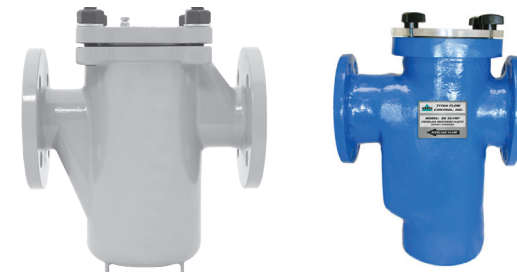


SANITARY VALVES and ACCESSORIES

STEAM



Hygienic Diaphragm Valves



Simplex Basket Strainers



Regulators



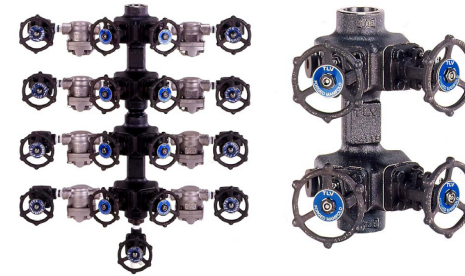
Divert Valves



Zero-Static Block Body Configurations



Integrated Sensing Platform



Manifolds



Y-Strainers



Sanitary Butterfly Valves



Tank Bottom Valves



PMO Mix-Proof Valve



Safety and Safety Relief Valves



Steam Traps

2013

George E. Booth Co., Inc. celebrates 50 years in business.



MISCELLANEOUS VALVES



HF Plug Valves



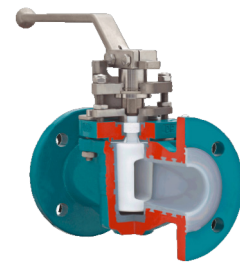
Safety Relief Valves



Cryogenic Ball Valves



Tank Bottom Valves



Plug Valves



Sample Valves



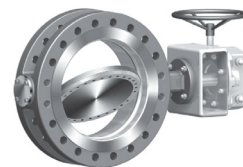
Pinch Valves



Metal Seat Ball Valves



Solenoid Valves



Triple Offset Butterfly Valves



Lined Ball Valves

FILTRATION



Bag and Cartridge Filters



Compressed Air Filters



Cartridges



Liquid Filter Bags



Filter-Regulators



Point-of-Use Filters

DISTRIBUTION PRODUCTS



Diaphragm Seals



Thermometers



Valves



Pressure Gauges



Connectors and Filters



Tube and Pipe Fittings



2014

The company opens a Process Training Unit in Romeoville, IL.



GAS DETECTION



Dräger

Not available
in all areas.

Fixed Gas Detection

DEWPOINT and RELATIVE HUMIDITY



www.gebooth.com

PHOENIX CONTACT



Wireless IO



Hot Swappable IO for
Process Automation

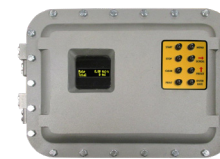


Isolators and Intrinsic
Safety Barriers



Cellular and Cloud
Communications

BATCHING



Batch Controllers



Rate/Totalizers



Printers

2021

George E. Booth Co., Inc. acquires Hurst Technical Services.

1-800-44-BOOTH



At George E. Booth Co., Inc., our mission is to provide process solutions to essential industries to help maintain the health and prosperity of the people in our communities.

By valuing honesty and integrity from the start, our foundation remains strong more than 60 years later. As a family-owned company, we believe no factor in business is more important than people—our customers, vendors, and employees.

As we strive to provide the highest-quality products and services, be assured that when you do business with us, you'll receive value every time.

Industries Served

**POWER • FOOD and BEVERAGE • LIFE SCIENCES
CHEMICAL • PETRO CHEMICAL • COATINGS
RUBBER and PLASTICS • WATER and WASTEWATER**



**INDIANAPOLIS, IN
8202 W. 10th Street
Indianapolis, IN 46214
317-247-0100**



**ROMEOVILLE, IL
43 E. Belmont Dr.
Romeoville, IL 60446
815-306-1800**



**CALVERT CITY, KY
625 N. Main Street
Calvert City, KY 42029
270-395-5116**

www.gebooth.com

1-800-44-BOOTH